

RESOURCE RECOVERY CALENDAR

2017-2018 Kerbside Bin Collections

SEPTEMBER 2017						
M	T	W	T	F	S	S
				1	2	3
4	5	6	7	8	9	10
11	12	13	14	15	16	17
18	19	20	21	22	23	24
25	26	27	28	29	30	

OCTOBER 2017						
M	T	W	T	F	S	S
30	31					1
2	3	4	5	6	7	8
9	10	11	12	13	14	15
16	17	18	19	20	21	22
23	24	25	26	27	28	29

NOVEMBER 2017						
M	T	W	T	F	S	S
			1	2	3	4
5	6	7	8	9	10	11
12	13	14	15	16	17	18
19	20	21	22	23	24	25
26	27	28	29	30		

DECEMBER 2017						
M	T	W	T	F	S	S
				1	2	3
4	5	6	7	8	9	10
11	12	13	14	15	16	17
18	19	20	21	22	23	24
25	26	27	28	29	30	31

JANUARY 2018						
M	T	W	T	F	S	S
1	2	3	4	5	6	7
8	9	10	11	12	13	14
15	16	17	18	19	20	21
22	23	24	25	26	27	28
29	30	31				

FEBRUARY 2018						
M	T	W	T	F	S	S
				1	2	3
4	5	6	7	8	9	10
11	12	13	14	15	16	17
18	19	20	21	22	23	24
25	26	27	28			

MARCH 2018						
M	T	W	T	F	S	S
				1	2	3
4	5	6	7	8	9	10
11	12	13	14	15	16	17
18	19	20	21	22	23	24
25	26	27	28	29	30	31

APRIL 2018						
M	T	W	T	F	S	S
30						1
2	3	4	5	6	7	8
9	10	11	12	13	14	15
16	17	18	19	20	21	22
23	24	25	26	27	28	29

MAY 2018						
M	T	W	T	F	S	S
			1	2	3	4
5	6	7	8	9	10	11
12	13	14	15	16	17	18
19	20	21	22	23	24	25
26	27	28	29	30	31	

JUNE 2018						
M	T	W	T	F	S	S
				1	2	3
4	5	6	7	8	9	10
11	12	13	14	15	16	17
18	19	20	21	22	23	24
25	26	27	28	29	30	

JULY 2018						
M	T	W	T	F	S	S
30	31					1
2	3	4	5	6	7	8
9	10	11	12	13	14	15
16	17	18	19	20	21	22
23	24	25	26	27	28	29

AUGUST 2018						
M	T	W	T	F	S	S
				1	2	3
4	5	6	7	8	9	10
11	12	13	14	15	16	17
18	19	20	21	22	23	24
25	26	27	28	29	30	31

- Zone 1 – Lancelin
- Zone 2 – Ledge Point
- Zone 3 – Gingin and properties East of Brand Highway (including Lennard Brook)
- Zone 4 – Seabird, Guilderton, Gingin Brook Road and all properties West of Brand Highway (including Beermullah, Wanerie, Coonabidgee, Muckenburra, Neergabby and Yeal) but EXCLUDING the Rural Estates below
- Zone 5 – Ocean Farms, Seaview Park, Sovereign Hill, Redfield Park, Woodridge

WHAT CAN GO IN YOUR RECYCLING BIN?



- ✓ Plastic – All plastic containers and plastic wraps (empty with lids off)
- ✓ Paper – All paper, junk mail and glossy magazines
- ✓ Cardboard – All cardboard products
- ✓ Aluminium & Steel – All metals, steel & aluminium including aerosol cans
- ✓ Liquid Paperboard – Milk, juice and laundry detergent cartons



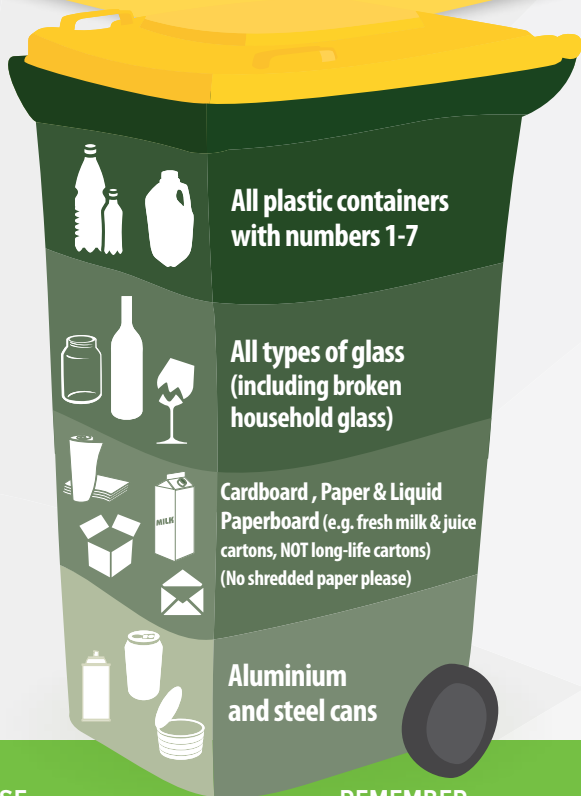
SUPPORTED BY



through the Waste Avoidance and Resource Recovery Account

All bin service enquiries 1300 059 391
or visit avonwaste.com.au

Did you know the contents of your yellow topped bin are recovered and recycled?



PLEASE

Empty and rinse
Remove lids
Do not flatten containers e.g. milk cartons
Items should be loose
Flatten cardboard boxes

REMEMBER


NO hazardous waste
NO kitchen or garden waste
NO building waste

Items such as plastic meat trays and foil can be contaminated with food. If there is more than 20% food waste on the item, please place it in your red bin.

Recycling & Waste Bin Collection

Collections will commence on the 1st of September 2017, depending on your zone. Your recycling collection will occur on the same day as your general waste collection.

You will need to know what Zone you are in. Zones are as follows:

	Zone 1 – Lancelin
	Zone 2 – Ledge Point
	Zone 3 – Gingin townsite and properties East of Brand Highway (including Lennard Brook)
	Zone 4 – Seabird, Guilderton, Gingin Brook Road and all properties West of Brand Highway (including Beermullah, Wanerie, Muckenburra, Neergabby and Yeal) but EXCLUDING the Rural Estates below
	Zone 5 – Ocean Farms, Seaview Park, Sovereign Hill, Redfield Park, Woodridge



Your general waste bin (red-topped) is collected every week.



Your recycling bin (yellow-topped) is collected fortnightly – please check the cover for your date.

If you are unsure of your Zone you can contact Avon Waste to confirm on **1300 059 391**

Waste Management Facilities

The Shire of Gingin has three waste management facilities all of which are Category 64 Class II Waste Management Facilities

Opening hours for each landfill are shown below.

GINGIN	Thursday to Monday	8.30am – 5.30pm
SEABIRD	Saturday to Wednesday	8.30am – 5.30pm
LANCELIN	Thursday to Monday	8.30am – 5.30pm

CLOSED CHRISTMAS DAY & GOOD FRIDAY
Shire of Gingin Administration Office: 9575 2211

Residential Waste and Tip Passes

- Tip passes are provided annually in the Rate Notice.
- The tip pass allows residents free general domestic waste disposals and unlimited clean green waste disposals delivered in sedans, utilities, station wagons, vans, floats and trailers up to 8m x 6m, or equivalent as determined by the Gate Attendant.
- The tip pass is not valid for commercial/business waste – fees and charges apply. Visit the Shire’s website for full details: gingin.wa.gov.au/council/fees-charges.aspx.
- Costs will also apply for disposal of some wastes including asbestos, tyres, more than 30L of waste oil and animal bodies.
- All waste that has a charge associated with its disposal must be paid for at the gatehouse before exiting. Please note there are no EFTPOS facilities available at present.
- The Shire of Gingin can offer the service of an account for large operators. All accounts must be applied for and approved before any waste will be accepted under the terms of the Shire. Please note administration fees may apply to the account service.
- Lost tip passes are available from the Shire of Gingin office – proof of property ownership and identification is required, and cost to replace is \$30.00.
- Residential waste loads without a valid tip pass will incur a fee.

Liquid Waste Disposal

The Shire of Gingin does not have the ability to accept septage waste from leach drains and grease traps. All septage waste is subject to the Department of Environment Regulation controlled waste regulations and must only be transported by a licensed contractor to an appropriate site.

Recycling at Waste Management Facilities

The Shire of Gingin offers a range of free recycling options at all its waste management facilities. These include:

- Domestic recyclables – glass bottles/jars, cardboard, aluminium and steel cans, and tins
- Scrap steel, de-gassed fridges, car bodies
- Car batteries – wet cell only
- Waste oil – domestic only less than 30L
- E-waste – TVs, computers, laptops, hard drives, printers, faxes, speakers, key boards, telephones, ipods etc.

Please note the Shire's landfill sites cannot accept household batteries or fluorescent tubes at this time.

The Shire also recycles the following for a fee:

- Waste tyres – various sizes (see Shire's Fees and Charges)
- Waste oil – all commercial and domestic waste oil greater than 30L (see Shire's Fees and Charges)
- Drum Muster – provides recycling of eligible, cleaned, non-returnable chemical containers (1 litre to 205 litre)

Commercial Waste

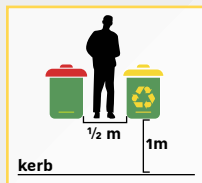
Shire of Gingin landfill sites accept commercial waste - fees and charges apply. Refer to the signage at Shire landfill sites or visit gingin.wa.gov.au/council/fees-charges.aspx.

Using Your Bins

BIN PLACEMENT

To assist waste and recycling operators in servicing your bin on collection day:


- Bins should be placed within 1 metre of the road kerb by 6.00am on collection day, with the handles facing towards the property, without the bin blocking footpaths or driveways.
- Place your yellow recycling bin about half a metre from the red bin to allow clear access for the side loading service vehicle's grab arm.
- Please do not overfill your bin as the rubbish and recycling trucks' hydraulics cannot lift bins weighing over 70kg, or those overfull with the lid open. Hot or burning ash, liquid wastes, oil, paint, solvents or heavy materials should not be placed in your bin as they may damage the bin, waste collection vehicle and the environment.
- Your bin lid must close so that the contents do not spill when it is lifted and so the lid does not blow open causing street litter.
- Place your bin clear of parked cars, trees, poles, etc to allow clear access to the service vehicles.
- Only waste placed inside the bin will be collected.



HANDY HINTS

- Return bins to your property as soon as possible.
- Store bins in a shaded area.
- Clean bins regularly.

For information on what to put in your recycle bin, visit recycleright.wa.gov.au



In the **yellow-topped bin** you can place:

- All plastic**
- All metal**
- All glass, even broken glass**
- All paper**

The yellow-topped bin is shown with a list of acceptable items: All plastic containers with numbers 1-7, All types of glass including broken bottles and jars, Carbonated, Paper & Liquid (Paper-based, Paper & Liquid, Paper-based, Paper & Liquid, Paper-based, Paper & Liquid), and Aluminium and steel cans.



The **red-topped bin** is for **household waste**, such as kitchen scraps and garden clippings, which can be composted, just like a home compost bin

The red-topped bin is shown with a list of acceptable items: Household waste, including kitchen scraps, garden clippings, and other household waste.



YOUR RECYCLING BIN (YELLOW-TOPPED)

Contents from your yellow-topped bin, **collected fortnightly**, are sorted and baled at the Regional Resource Recovery Centre and sold for reprocessing.

Items should be LOOSE (not in plastic bags) and rinsed.

This includes:

- ✓ **All glass**, even broken glass.
- ✓ **All plastic** containers (empty), including salad dressing, tomato sauce, condiment bottles & empty plastic bags.
- ✓ **All cans & tins** including aerosol cans & tin foil.
- ✓ **All paper** products including glossy magazines & pizza boxes.

See **Resource Recovery A-Z** for a list of other items.



YOUR WASTE BIN (RED-TOPPED)

Contents from your waste bin (red-topped), **collected weekly**, are disposed at a landfill site. To reduce your impact on the environment, you could try composting or worm farming at home. Visit recycleright.wa.gov.au for more information on how to get started.

✗ NO Glass

(ALL glass goes in your recycling bin (yellow-topped).

✗ NO Batteries

Take batteries to either Gingin, Lancelin or Seabird Landfill sites.

✗ NO Hazardous waste: petrol, gas cylinders, paints, motor oils & fluids, garden chemicals & poisons, pool chemicals, cleaners, acids, bleaches & ammonia, medicines & flammable liquids.

✗ NO Medical wastes or needles.

✗ NO Construction, demolition & building materials (including bricks, sand, soil, concrete, rocks and asbestos).

See **OTHER ITEMS** for assistance with items that don't go into your bins.

Resource Recovery Guide: A – I

PLEASE PUT IT IN THE RIGHT BIN!

1	Yellow-topped bin items Containers, tins, paper, and cardboard
2	Red-topped bin items General waste
3	Waste management facility Bulk, hazardous & construction materials
4	Community service items Reusable items/goods

A

1	Aerosol cans
1	All glass, any glass
1	Aluminium cans
1	Aluminium foil
3	Auto batteries – wet cell only

B

2	Band-Aids
2	Baskets
1	Beer bottles
1	Beer cartons
4	Blankets
1	Books
1	Bottles [top/lids off]
1	Bottle tops/lids
3	Bricks (C&D)
1	Broken glass
3	Building materials/ waste (C&D)
3	Bulky items

D

3	Dirt & soil
2	Disposable nappies
1	Drink cans

E

1	Egg Cartons
4	Electrical appliances
1	Envelopes
3	E-waste

F

3	Flooring
2	Fly tape
1	Foam boxes
1	Foam meat trays
1	Foil
1	Food cans (rinsed)
1	Fruit juice cartons
4	Furniture (fixed)
3	Furniture (broken)

For disposal of Hazardous Household Waste (HHW) including acid, ammonia, bleaches and fertilisers, contact the Shire.

C

1	Carbon paper
1	Cardboard (boxes & other types)
2	Cassette tapes (audio & video)
1	Cellophane
1	Ceramic (broken plates, pots)
1	Cereal boxes
4	Clothing/shoes
1	Coffee jars & cans
4	Computer components/ accessories
1	Computer paper
3	Concrete
2	Cooking fat
2	Cork
1	Cosmetic jars
2	Cotton wool
2	Cotton wool buds
1	Cups & saucers
2	Cutlery (other)
2	Cutlery (plastic)

G

3	Garden waste (large)
2	Garden waste (small prunings and grass clippings)
3	Garden hose
4	Gas cylinders
1	Glad wrap
1	Glass (ALL Types)
1	Glossy magazines/ brochures
1	Greaseproof paper

H

3	Hosepipe (garden hose)
3	Household goods

I

1	Ice cream containers (cardboard)
1	Ice cream containers (plastic)

Flatten cardboard boxes before placing them in your yellow-topped bin



Resource Recovery Guide: J – Z

J

1 Jars

1 Jar lids

1 Juice cartons/bottles/
containers

2 Junk (small items)

3 Junk (too large for Red
Bin)

K

2 Kitty litter

L

3 Large garden waste

1 Liquid paper board

2 Lolly wrappers

1 Long-life cartons

1 Lunch boxes

M

1 Magazines

2 Manure/animal
droppings

1 Margarine tubs

1 Meat trays

1 Milk bottles and milk
cartons

4 Mobile phones

3 Motor oil (Contact Shire
of Gingin)

N

2 Nappies (disposable)

1 Newspapers

2 Pens/biros/textas/
pencils

R

2 Rope

3 Rubber tyres

S

2 Sanitary pads

1 Sauce bottles (rinsed)

1 Seedling containers

2 Shredded paper

2 Soap

1 Soft drinks bottles
(empty)

1 Soft drink cans

3 Soil

1 Spirit bottles (empty)

1 Steel cans (rinsed)

T

1 Take-away food
containers (rinsed)

2 Tampons

2 Terracotta tiles/pots

3 Timber

3 Timber – treated

2 Tissues

2 Toothbrushes

2 Toothpaste tubes

1 Toilet paper rolls (inner)

1 Tops (jars/bottles)

2 Toys (broken)

3 Toys (electronic)

4 Toys (fixed)

3 Tyres

O

3 Oil (motor)
(Contact Shire of Gingin)

P

1 Paint tins (empty)

3 Paint tins

1 Paper bags

1 Paper (not shredded)

1 Paper towel rolls

1 Pet food tins (rinsed)

1 Phone books

2 Picture frames (broken)

4 Picture frames (fixed)

1 Pizza boxes

2 Placemats

1/**4** Plastic bags (empty)

1 Plastic bottle lids

1 Plastic containers

1 Plastic containers (large)

2 Plastic cutlery

1 Plastic plant pots

1 Plate glass

2 Polystyrene

2 Pottery

4 Printer cartridges

1 Pyrex (ovenware)

V

2 Vacuum cleaner dust

2 Vinyl school bags
(broken)

4 Vinyl school bags
(fixed)

3 Other vinyl (kitchen
tiles etc)

W

1 Waxed cardboard

1 Waxed paper

2 Weeds

3 White goods

1 Windowpanes

1 Wine bottles

2 Wood (garden pruning)

3 Wooden planks/bits of
wooden furniture

1 Wrapping paper

Y

1 Yoghurt containers

Place disposable nappies
in your red-topped bin



Greenwaste Kerbside Collection

The Shire of Gingin undertakes kerbside Greenwaste collection from October to November throughout different collection areas as outlined below:

COLLECTION AREAS / DATES 2017			
Collection Week	Collection Dates	Days Req'd	Collection Areas
Week 1	16 October	1	Gingin Townsite
	17/18 October	2	Woodridge
	19 October	1	Sovereign Hill
Week 2	23/24/25 October	3	Guilderton
	26 October	1	Seabird/Redfield Park
	27 October	1	Ledge Point
Week 3	30 October	1	Ledge Point
	31 Oct / 1-2 Nov	3	Lancelin
Week 4	3 November	1	Ocean Farm, Sunset and Seaview Park

Note: Collections will be between Monday and Friday.

Mulch Locations

Area	Location
Gingin Townsite	Beside Cattle Yards at Rec Centre
Woodridge	Beside Fire Brigade Shed
Sovereign Hill	Near Entry from Indian Ocean Drive
Guilderton	Old Oval beside Golf Course
Redfield Park	Beside Fire Brigade Shed
Seabird	Reserve next to Tennis Court
Ledge Point	Opposite Tennis Courts
Lancelin	Corner Mullins & Master Streets
Ocean Farm	Beside Fire Brigade Shed
Seaview Park	Community Centre

For more information contact the Shire of Gingin on 9575 2211

Other Items

AUTOMOTIVE PRODUCTS If you have automotive products (coolants, brake pads, motor oil and tyres), discuss the right way to get rid of them with your mechanic or car service provider.

BOOKS, CLOTHING, FURNITURE, SHOES, BRIC-A-BRAC Please do not throw out household goods. There is a major need for clean, undamaged, reusable furniture which may be collected FREE of charge. Contact your local charity.

COMPACT FLUORESCENT TUBES (CFL) Contact the Shire for disposal of these items..

COMPUTERS AND IT Old Computer and IT equipment can be dropped off at Gingin, Lancelin and Seabird landfill sites for recycling.

GAS BOTTLES For LPG refills and disposals, return to your bottle supplier. HHW drop off facilities will accept unwanted or out of date BBQ cylinders.

HOUSEHOLD BATTERIES Contact the Shire for disposal of these items.

NEEDLES Place needles in a sealed sharps container. Visit safesharps.org.au to find your nearest disposal location.

OLD MEDICINES If you have leftover medicines, enquire at your local pharmacy as many pharmacies can dispose of them properly through the RUM project.

PLASTIC BAGS

A good way to avoid plastic bags is by taking your own reusable shopping bags to the shops, and while you can place them into your recycling bin, many supermarkets now also have plastic bag recycling bins located towards the front of the store. Once full, the bins are collected, transported interstate or overseas and turned into new products.

TOWELS, SHEETS, CAT FURNITURE AND CARRY CAGES

Cat Haven 08 9442 3600 or visit www.cathaven.com.au

For tips on how to produce less waste and what to do with items that don't belong in either bin, download the free Recycle Right app from the App Store or Google Play, or visit m.recycleright.wa.gov.au



We all know recycling is a simple way that everyone can help the environment. Recycle Right is a campaign which encourages and assists residents and businesses to recycle, reduce their rubbish and buy more recycled products. The 3 R's – reduce, reuse and recycle – are a simple way to rethink the things that you no longer need and make a difference today!

EASY TIPS FOR BETTER RECYCLING:



In the **yellow-topped bin** you can place;
All plastic
All metal
All glass, even broken glass
All paper

Place items loosely in the bin, this helps with the sorting process at the Regional Resource Recovery Centre (RRRC).

Before placing anything in either bin, ask yourself if it can be reused. It's better to reuse before recycling.



The **red-topped bin** is for **household waste**, such as kitchen scraps and garden clippings, which can be composted, just like a home compost bin

Some things should not go in either bin, such as batteries, electronic devices or e-waste, or hazardous household waste. Disposal options for these are given in this calendar.



**recycle[®]
right**

Recycling's as easy as RRRC...

The **Regional Resource Recovery Centre**, or RRRC, is a green initiative of the Southern Metropolitan Regional Council, (SMRC). Covering an area of 340km² and a combined population of around 288,000 residents, it uses state of the art technology and infrastructure to process waste and recover recyclables for reuse.

The RRRC diverts more than 60,000 tonnes of waste per year from landfill and prevents about 70,000 tonnes of carbon dioxide from entering the atmosphere, which is equivalent to taking more than 7,000 cars off the road.



Want to see what happens to your recycling?

Free tours of the RRRC are available, helping to educate people about the recycling process while offering safe and clear views into the different facilities.

Find out more by calling **9256 9555** or visit **recycleright.wa.gov.au**



To dispose of this item, please place into
the yellow-topped recycling bin.



Shire of Gingin
7 Brockman Street, Gingin WA 6503
Telephone: 9575 2211
gingin.wa.gov.au

AVON
WASTE
9641 1318
avonwaste.com.au



recycle[®]
right
recycleright.wa.gov.au

The logo consists of a circular graphic with three arrows in green, red, and yellow forming a clockwise cycle, positioned above the text "recycle right".

WASTE
AUTHORITY
WA...TOO GOOD TO WASTE

through the Waste Avoidance and Resource Recovery Account